



MONTHLY MEMBERSHIP PROGRESS REPORT

District 9 SE

Results as of: 11/30/2018

GMT: MICHAEL MOLENDIA

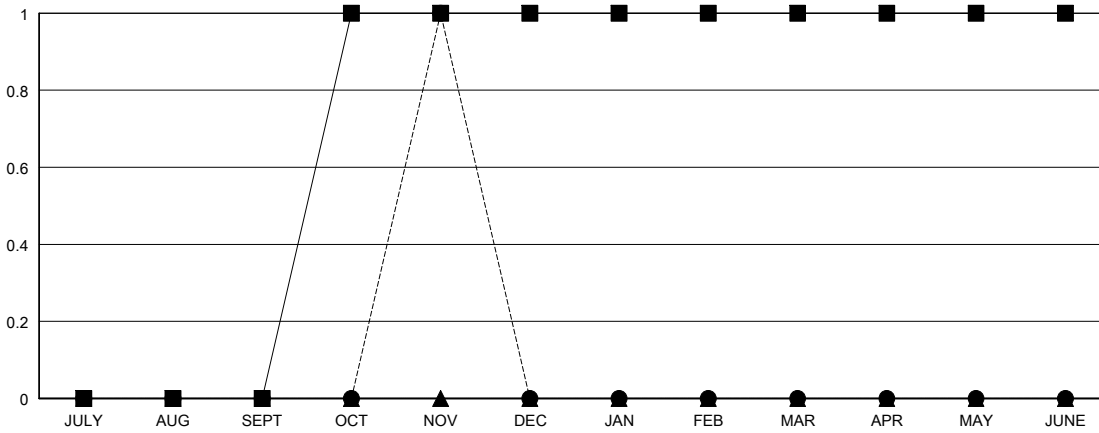
LOCATION IOWA

GMT CA

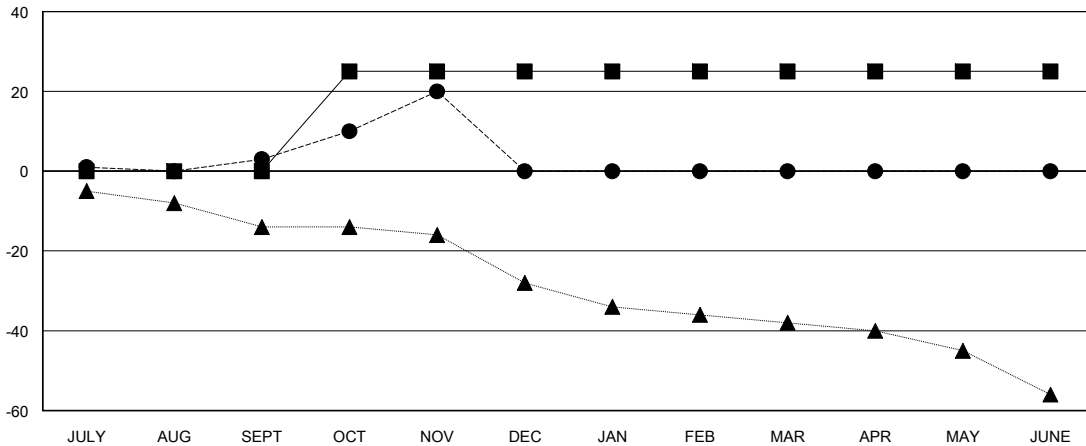
Clubs			
RESULTS FOR 2018-2019			
QUARTER	NEW CLUB GOAL	NEW CLUBS	DROPPED CLUBS
JULY/AUG/SEPT	0	0	0
OCT/NOV/DEC	1	1	0
JAN/FEB/MAR	0	0	0
APR/MAY/JUNE	0	0	0

Members			
RESULTS FOR 2018-2019			
QUARTER	MEMBER GROWTH NET GOAL	MEMBER GROWTH ACTUAL	DROPPED MEMBERS ACTUAL (including transfers)
JULY/AUG/SEPT	0	12	7
OCT/NOV/DEC	25	33	16
JAN/FEB/MAR	0	0	0
APR/MAY/JUNE	0	0	0

GOALS AND ACTUAL NEW CLUBS CUMULATIVE



GOALS AND ACTUAL MEMBERS CUMULATIVE



DROPPED CLUBS: 0

17 CLUBS OF 49 ADDED 1 OR MORE NEW MEMBERS

GENDER DISTRIBUTION	
MALE	796 (69.64%)
FEMALE	347 (30.36%)
Women Percentage Fiscal Year Goal: 32%	

DROPPED MEMBERS	
DECEASED	2
CLUB CANCELLED	0
OTHER	21
TOTAL	23

[CLICK HERE FOR CUMULATIVE MEMBERSHIP DATA](#)

TOTAL FAMILY UNIT MEMBERS	235
FAMILY MEMBERS PAYING HALF DUES	118